



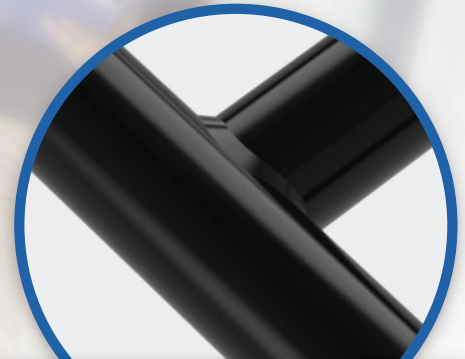
SCAN TO LEARN MORE

Resource Solutions of
SF Group, Inc
www.rsgsf.com
855-742-6100



**FIT FOR DOUBLE OR
TRIPLE SLIM JIM BINS**

A durable and space-saving waste management solution
designed for schools and educational facilities.



**RUGGED CARBON STEEL
FRAME CONSTRUCTION**



**HIGH CAPACITY LOCKING
SWIVEL WHEELS**

RSG100 WASTE CART

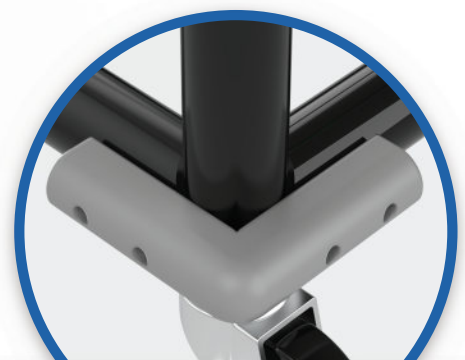
This space-saving waste bin cart efficiently handles high-volume collection while keeping hallways, classrooms, and common areas clean and clutter-free. Its sleek design allows for easy maneuverability, making it a practical choice for maintaining a tidy and sustainable learning environment.

PRODUCT FEATURES

- Full Commercial Grade
- Powder Coating Finish
- Available With or Without Wheels
- Add-On Lids (Optional Add-On)
- Stainless Steel (Optional Upgrade)

SPECS

- 37.4" W x 36.2" H x 24.4" D (with bins and wheels)
- 250lb Wheel Capacity
- 23 Gallon Bin Capacity
- 4 Rubber Corner Bumpers



**RUBBER WALL-SAVER
CORNER BUMPERS**

Made in USA